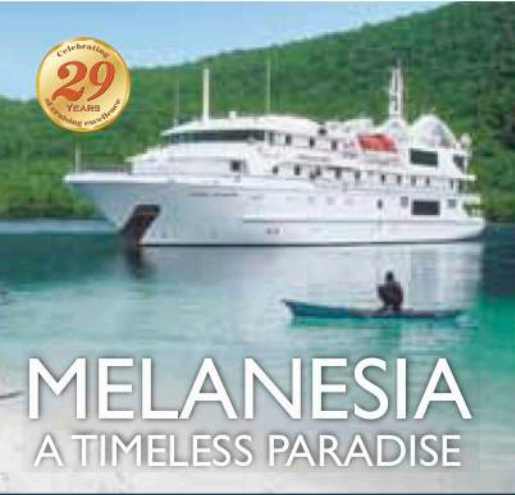


Celebrating  
**29**  
YEARS



# MELANESIA

## A TIMELESS PARADISE

The Ultimate 13-Night expedition through Papua New Guinea, Solomon Islands, Vanuatu and New Caledonia

**EARLY BIRD SPECIALS**  
When cruising on our 11 November 2012 departure

**SAVE**  
up to 25%\*  
or no single supplement

Join Australia's Coral Princess Cruises in November 2012 to discover the legendary romance of the South Pacific and the sparkling collection of treasure islands that form the undiscovered archipelago of Melanesia. Over 13 unforgettable nights cruising aboard the state-of-the-art Oceanic Discoverer, this remarkable expedition combines the French colony of New Caledonia, the 'Happy Islands' of tropical Vanuatu, the rarely visited Solomon Islands and mysterious Papua New Guinea.

Cruising in the company of just 70 other guests, you will encounter the warm and colourful welcome of the Melanians, as they welcome you into their traditional village homes and help you explore scenic highlights well beyond the reach of larger cruise ships. Aboard your unique 'Xplorer' excursion boat and a fleet of inflatable zodiacs, and with the expert local knowledge of our experienced Guest Lecturers and Expedition Leader, you are assured of making the most of every minute of your expedition. Join us to experience the true warmth, magical cultures and spectacular scenic highlights of Melanesia, we guarantee it will charm and delight you and create memories to last a lifetime.

**CORAL PRINCESS CRUISES**

Dream - Explore - Discover

For bookings and information

**Free Call 1800 079 545**

Visit: [www.coralprincess.com.au](http://www.coralprincess.com.au)

Email: [reservations@coralprincess.com.au](mailto:reservations@coralprincess.com.au)

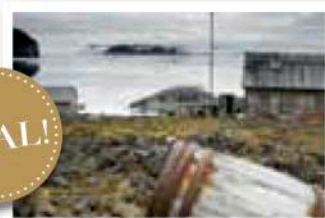


\*Conditions: Special is subject to availability and is not combinable with any other discount. Valid for new bookings only made until 31 July 2012 or until sold out. 15% saving valid for first time travellers, 25% saving is valid for Coral Princess Cruises past guests. No single supplement is valid for genuine single travellers only. Enquire for further details.

from the marketplace

## SAIL & SAVE!

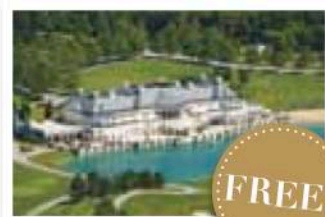
**DEAL!**



**Aurora Expeditions** is offering a **two-for-one deal** on a 14-day 'Voyage to the End of the Earth' cruise of the Russian Arctic, exploring the Novaya Zemlya and Franz Josef Land archipelagos. Ice-strengthened *Akademik Shokalskiy*, the only suitably equipped 'small ship' visiting this highly restricted region, will treat a maximum of 54 passengers to

diverse marine wildlife, historical huts, abandoned research stations and ice-covered islands populated by polar bears.

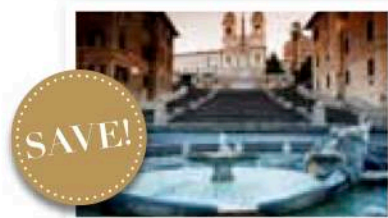
Cruising from September 8, 2012, and priced from \$4,265 (including discount), the cruise includes one night's accommodation in Murmansk pre-voyage (September 7, 2012), airport transfers and a Murmansk city tour. For details call 1800 637 688 or visit [www.auroraexpeditions.com.au](http://www.auroraexpeditions.com.au).



**FREE!**

**Botanica** is offering **free return airfares** for a 15-day European river cruise on *MS AmaVerde* next year. The 'Gardens, Gourmet and Golf' cruise between Amsterdam and Budapest, departing April 27, 2013, satisfies the divergent interests of travellers with options for the appreciation of gardens, gourmet food and golf courses along the way.

The fare, from \$8,975 per person, includes 41 meals (wine and beer with lunch and dinner on board and 24-hour tea and coffee), excursions of choice, tips, airport transfers and port charges, but golfers pay a \$1,500 supplement. For details call 1300 305 202 or visit [www.botanica.travel](http://www.botanica.travel).

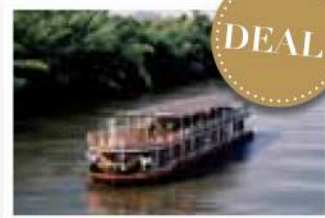


**SAVE!**

**Travel The World** has **reduced fares** for Holland America Lines' 11-night 'Adriatic Explorer' cruise aboard *MS Noordam*, departing Rome on April 25, 2013. Ports of call include Venice, Italy; Santorini, Greek Islands; the Venetian city of Corfu; and Dubrovnik, Croatia.

Prices start at \$1,909 per person twin share, including port charges and taxes.

Bookings made exclusively through Travel the World also receive a Pinnacle Grill Dinner per person on board and Bon Voyage Sparkling Wine – one bottle per stateroom. Call 1300 857 437 or visit [www.traveltheworld.com.au](http://www.traveltheworld.com.au).



**DEAL!**

Small-ship travel expert **eWaterways** has **two-for-one deals** for cruisers on any June or September 2012 or 2013 sailing of the newly built colonial-style river cruiser *The River Kwai*. The first inland cruise ship in Thailand, *The River Kwai* was specifically commissioned to sail the narrow and curvy Kwai Noi River, the waters of

which now provide easy access to temples, waterfalls, Khmer ruins and the famous Bridge over the River Kwai.

The four- to seven-day cruises on *The River Kwai*, including transfer from Bangkok, are priced from \$471 (prices fluctuate according to exchange rates). For details call 1300 503 669 or visit [www.ewaterways.com.au](http://www.ewaterways.com.au).

# Borneo

## EXPLORE THE DIVERSITY WITH ORION EXPEDITION CRUISES

The wild jungles of Borneo are some of the oldest undisturbed areas of tropical rainforest in the world. Borneo's biodiversity is unparalleled with hundreds of species of birds, mammals, reptiles fish, and amphibians. There are also over 20,000 identified plants, including extremely rare orchids. You'll also meet the extraordinarily intelligent 'Man of the forest', better known as the orangutan the largest tree dwelling mammal, and the only great ape found in Asia.

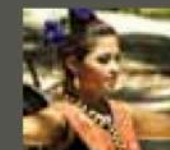


### 2012 BORNEO EXPEDITIONS



**SECRETS OF SABAH**  
Departs 25 July & 12 September 2012

You have a chance to see wild orangutans, proboscis monkeys, macaques, Borneo pygmy elephants and countless bird species as we journey along the Kinabatangan River.



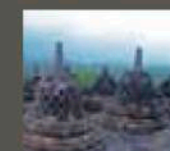
**ACROSS THE WALLACE LINE**  
Departs 22 September 2012

With majestic panoramas, captivating villages and dramatic ceremonies, Tana Toraja is the undisputed highlight of any journey to Sulawesi.



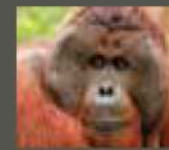
**RAJAHS, RICHES & RAINFORESTS**  
Departs 4 August 2012

Our visit to Bandar Seri Begawan in Brunei highlights the diversity of cultures embedded through the island.



**BORNEO, BORODUDUR & BEYOND**  
Departs 22 October 2012

Visit Tana Toraja, 'Land of the Heavenly Kings' and the orangutans of the world famous Camp Leakey plus a day trip to the extraordinary lost temple of Borobudur in Central Java.



**CAMP LEAKEY - FACES IN THE FOREST**  
Departs 14, 24 August, 2 & 12 October 2012

The landmark Camp Leakey in Tanjung Puting National Park gives you the opportunity to view the rehabilitation of the ex-captive orangutans.



ORION II IN BORNEO

*Orion II is more mega-yacht than cruise ship, with 100 guests cared for by an experienced crew of 70. Life on board is relaxed and casually elegant. From gourmet meals to pampering at the beauty salon, you will rediscover your capacity for relaxation and indulgence.*

**ORION**  
EXPEDITION CRUISES

To make a booking call **1300 361 012**, visit [www.orionexpeditions.com](http://www.orionexpeditions.com) or see your travel agent.

\*Fares are per person, twin share in Australian Dollars. Fares are based on Category B stateroom including 15% savings. Savings vary by category type and sailing date and are subject to availability. Fares are correct at time of print.

**Save up to 15%\***  
10 nights from \$6,930pp twin share\*

2013 BORNEO EXPEDITIONS OUT NOW